

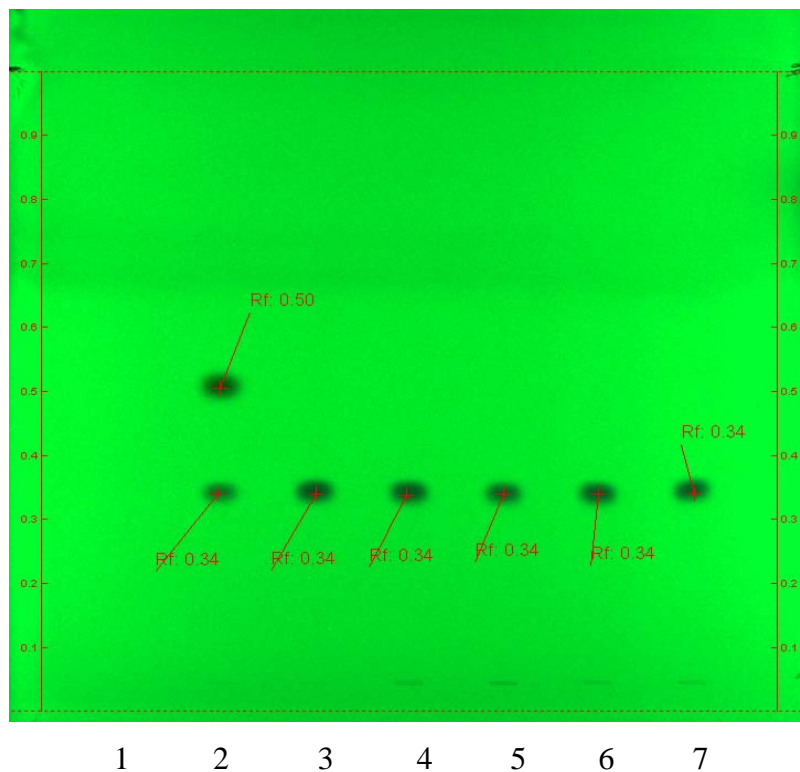


Zolpidem Tablets – BP 2015

This chromatogram is provided for information only as an aid to analysts and intended as guidance for the interpretation and application of BP monographs.

Example chromatogram for solutions (1), (2) and (3) in Identification A for Zolpidem Tablets as published in the BP 2015.

1. 1 % v/v of diethylamine in methanol (blank)
2. 0.15% w/v each of flunitrazepam and zolpidem tartrate – solution (3)
3. 0.3% w/v of zolpidem tartrate – solution (2)
4. solution (1)
5. solution (1)
6. solution (1)
7. solution (1)



TLC Plate:	: Merck TLC silica gel 60 F254, 250 µm, 20 cm × 20 cm
Mobile Phase:	: 10 volumes diethylamine, 45 volumes of cyclohexane and 45 volumes of ethyl acetate
Diluent:	: 1 % v/v of diethylamine in methanol
Application:	: 5 µL
Development:	: 15 cm from the point of application
Drying:	: Dried in air
Detection :	: Ultraviolet light at 254 nm
Development time:	: Approximately 1hr 10 min