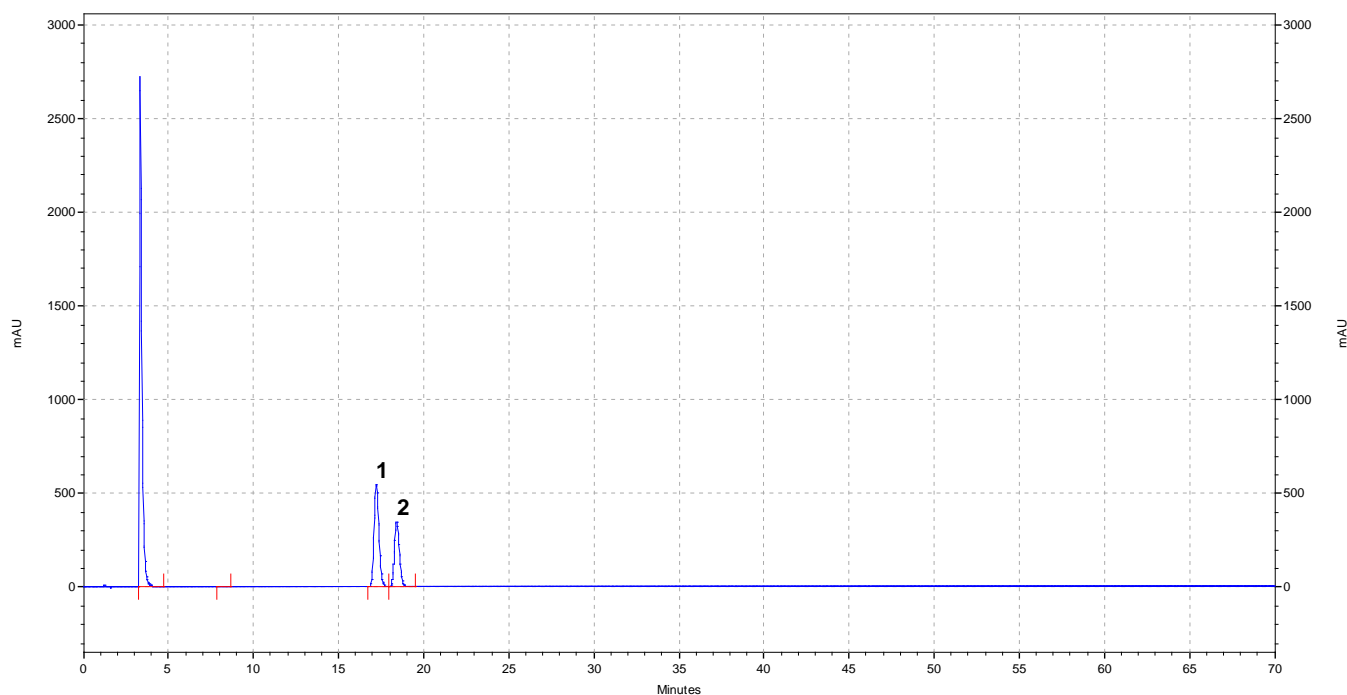




## Budesonide Aqueous Nasal Spray – BP 2015

These chromatograms are provided for information only as an aid to analysts and intended as guidance for the interpretation and application of BP monographs.

Typical chromatogram for solution (1) in the Related Substances test for Budesonide Aqueous Nasal Spray as published in BP 2015.



Peak ID: 1: Budesonide Epimer B; 2: Budesonide Epimer A.

Column : Spherisorb ODS2 (150 mm x 4.6 mm, 3 $\mu$ m)  
Method Ref. : Related Substances method for the Budesonide Aqueous Nasal Spray monograph from BP 2015  
Mobile Phase A : A mixture of 2 volumes of ethanol, 34 volumes of acetonitrile and 66 volumes of phosphate buffer pH 3.2.  
Mobile Phase B : A mixture of equal volumes of acetonitrile and phosphate buffer pH 3.2.

Gradient :

Time (min)	Mobile Phase A (% v/v)	Mobile Phase B (% v/v)
0-38	100	0
38-50	100-0	0-100
50-60	0	100
60-61	0-100	100-0
61-70	100	0

Diluent : A mixture of 34 volumes of acetonitrile and 66 volumes of phosphate buffer pH 3.2.  
Flow Rate : 1.0 mL/min  
Column Temp : 50°C  
Injection Volume : 100  $\mu$ L  
Detection : 240 nm