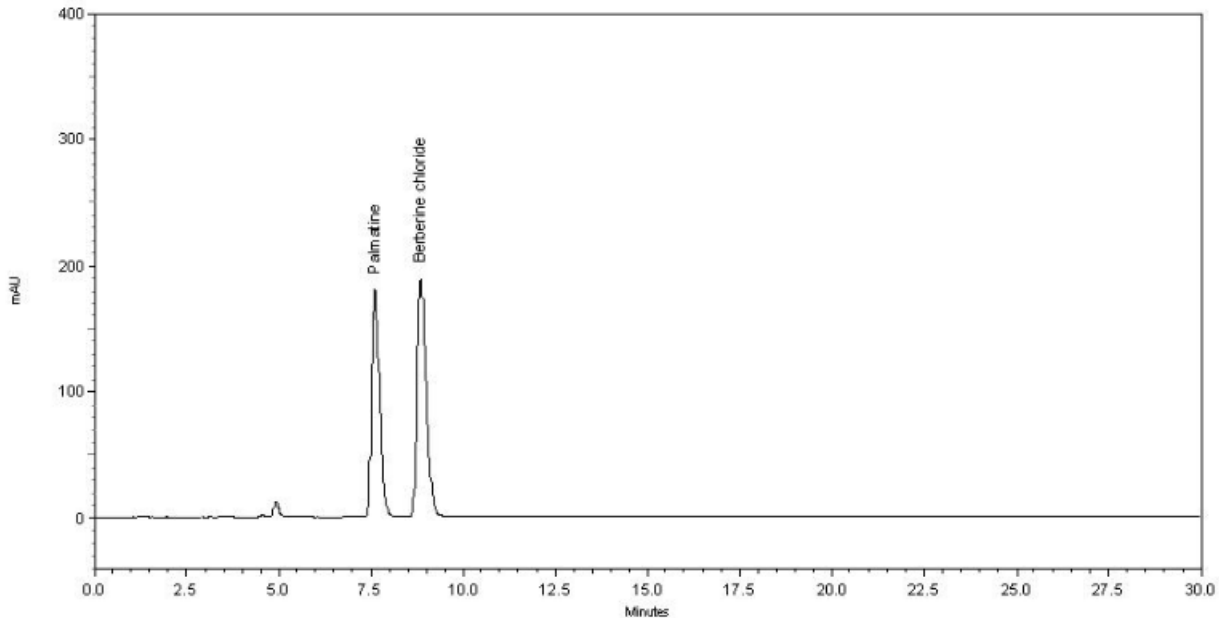




Berberis Aristata – BP 2016

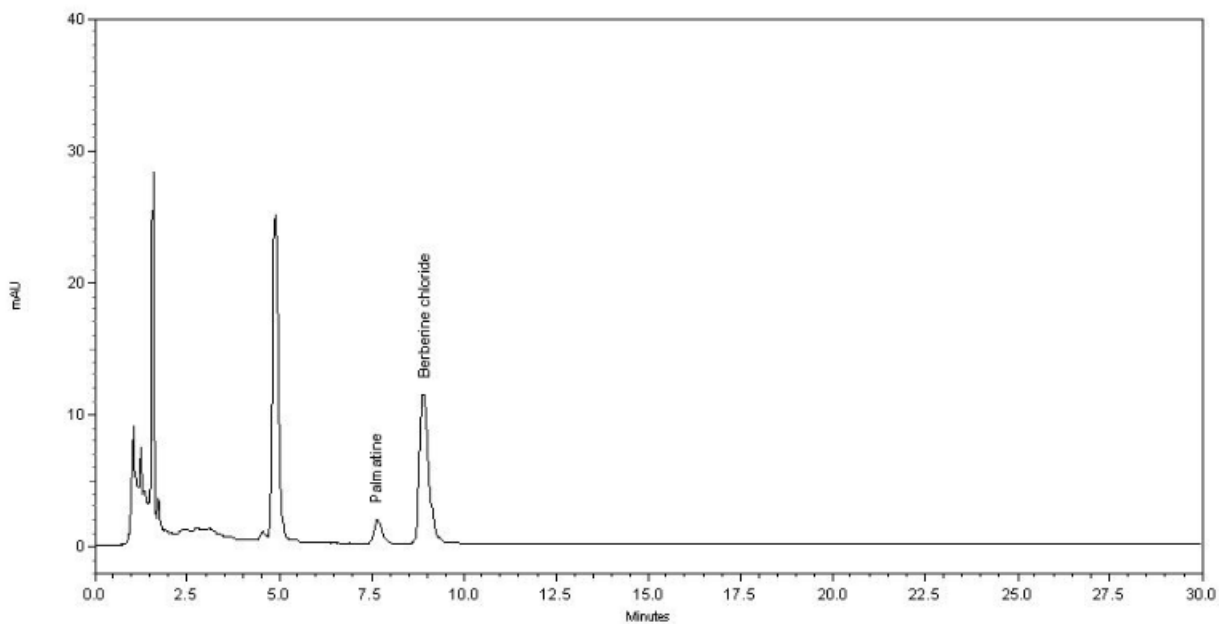
These chromatograms are provided for information only as an aid to analysts and intended as guidance for the interpretation and application of BP monographs.

Typical chromatogram for solution (2) in the Assay test for Berberis Aristata as published in BP 2016.



The chromatogram shows two peaks, palmatine (190 mAU) at 7.5 minutes and berberine chloride (200 mAU) at 9.0 minutes

Typical chromatogram for solution (1) in the Assay test for Berberis Aristata as published in BP 2016.

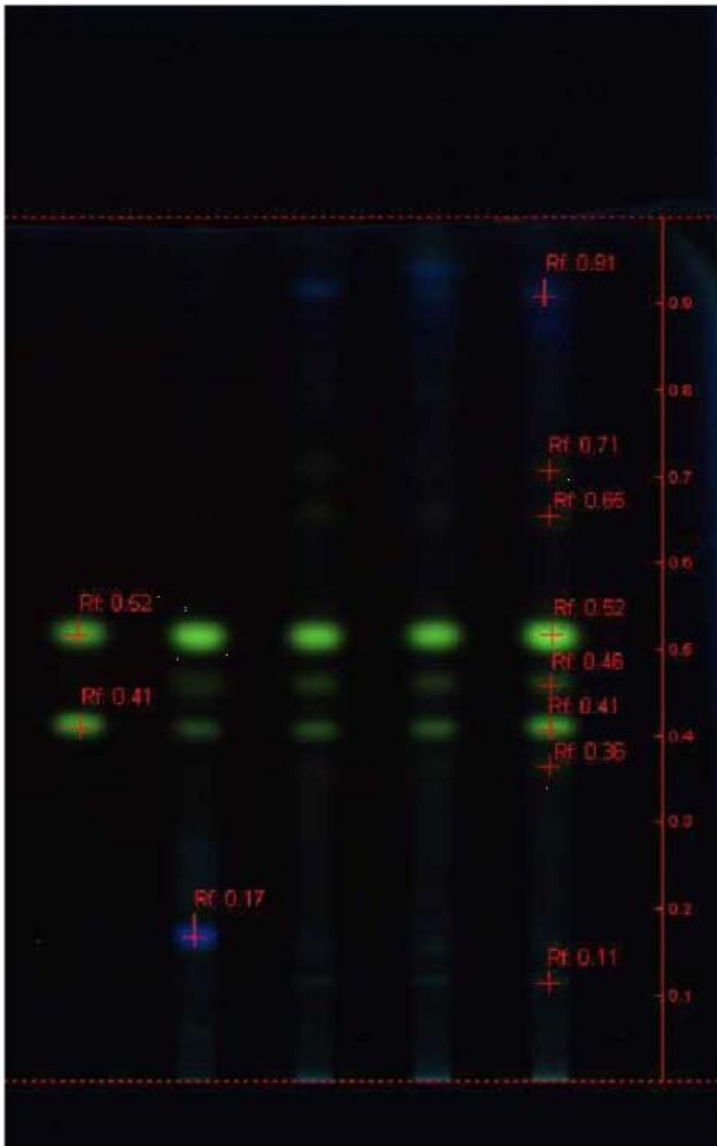


The chromatogram shows two known peaks, palmatine (1 mAU) at 7.5 minutes and berberine chloride (10 mAU) at 9.0 minutes



Typical chromatogram for solution (2) in the Identification test for Berberis Aristata as published in BP 2016.

Solution (1)
Solution (2)



2 |-----1-----|