



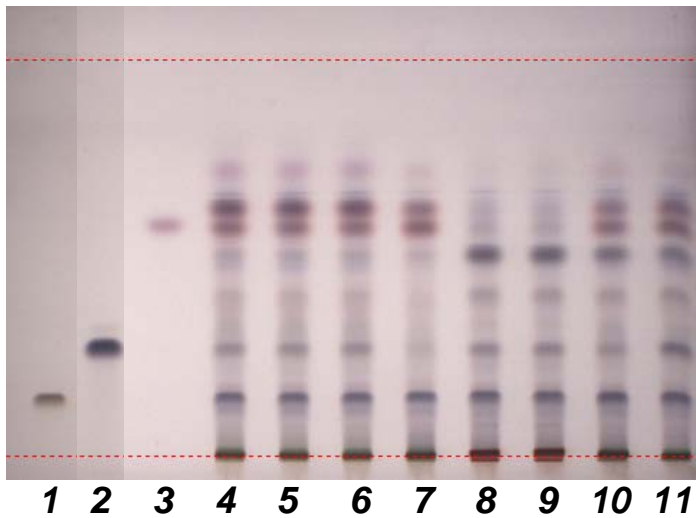
Azadirachta Indica Leaf – BP 2016

These chromatograms are provided for information only as an aid to analysts and intended as guidance for the interpretation and application of BP monographs.

Typical chromatogram for the Identification test for Azadirachta Indica Leaf as published in BP 2016.

Solutions

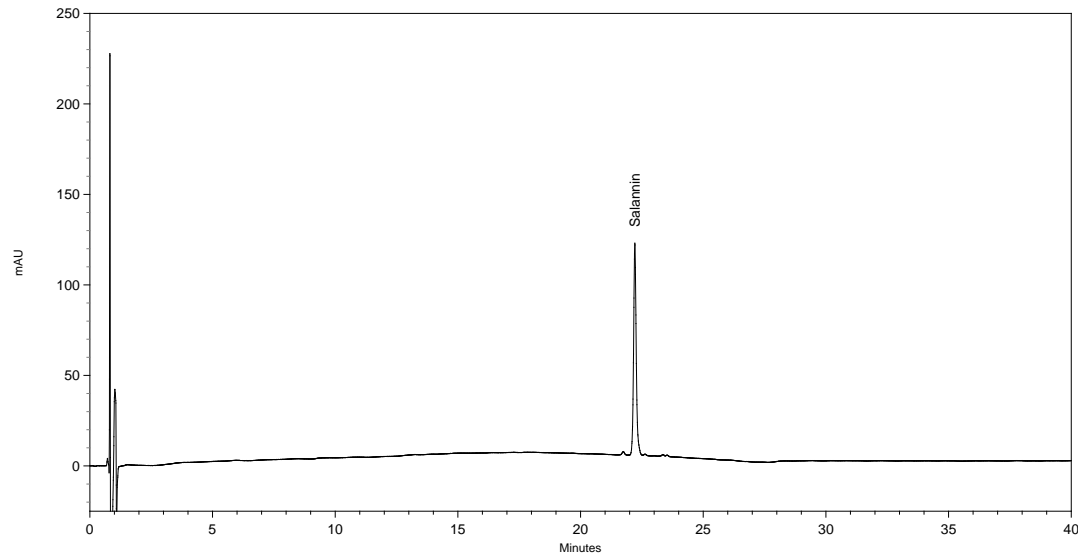
- 1) 0.05% w/v of Azadiractin A
- 2) 0.05% w/v of Salannin
- 3) 0.011% w/v of β -sitosterol
- 4 to 11) Sample preparation





Typical chromatogram for the Assay test for *Azadirachta Indica* Leaf as published in BP 2016.

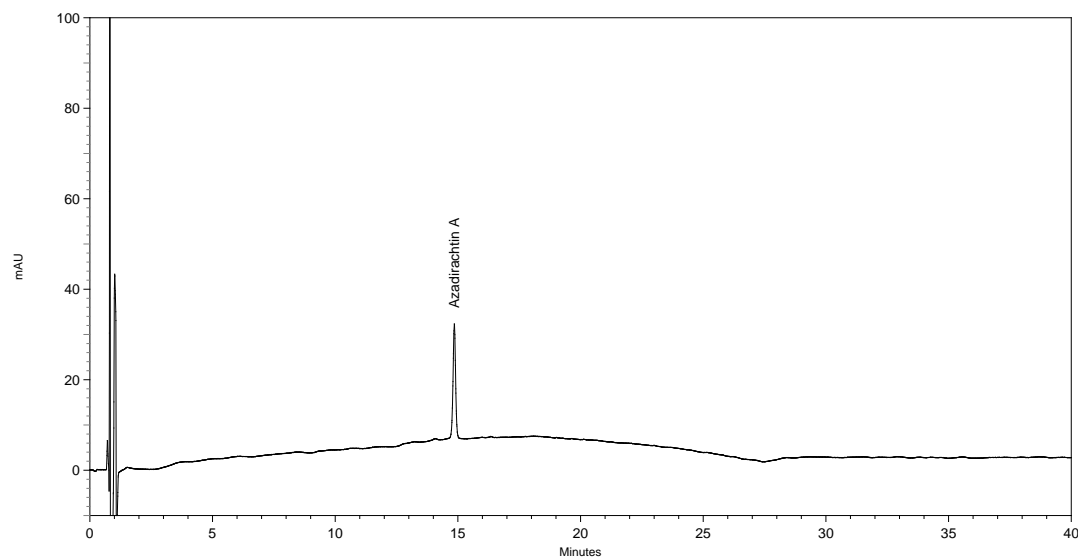
0.0026% w/v of Salannin



The chromatogram shows one peak salannin (120 mAU) at 22.0 minutes.

Typical chromatogram for the Assay test for *Azadirachta Indica* Leaf as published in BP 2016

0.0012% w/v of Azadirachtin-A

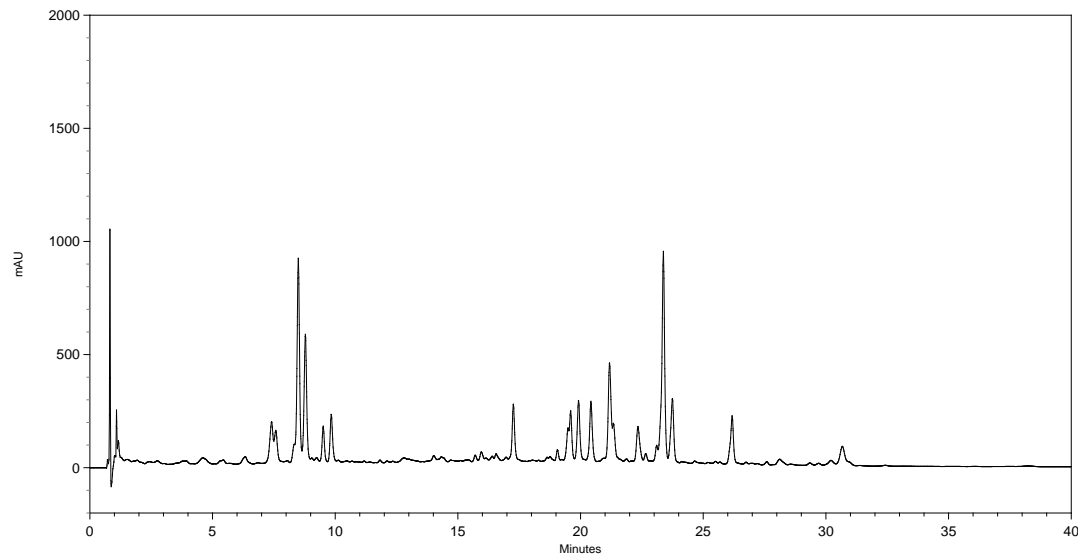


The chromatogram shows one peak azadirachtin-A (35 mAU) at 15.0 minutes.



Typical chromatogram for solution (1) in the Assay test for Azadirachta Indica Leaf as published in BP 2016

Solution (1):
Test solution



The chromatogram shows large number of peaks, eluting in two main groups (5 to 10 minutes and 18 to 26 minutes).