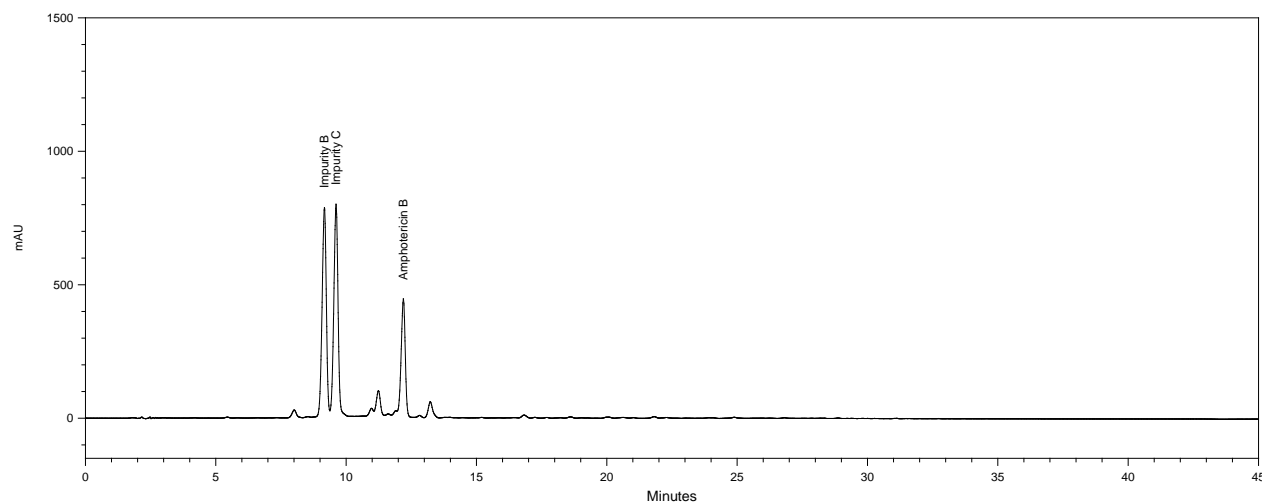




Amphotericin for Infusion – BP 2016

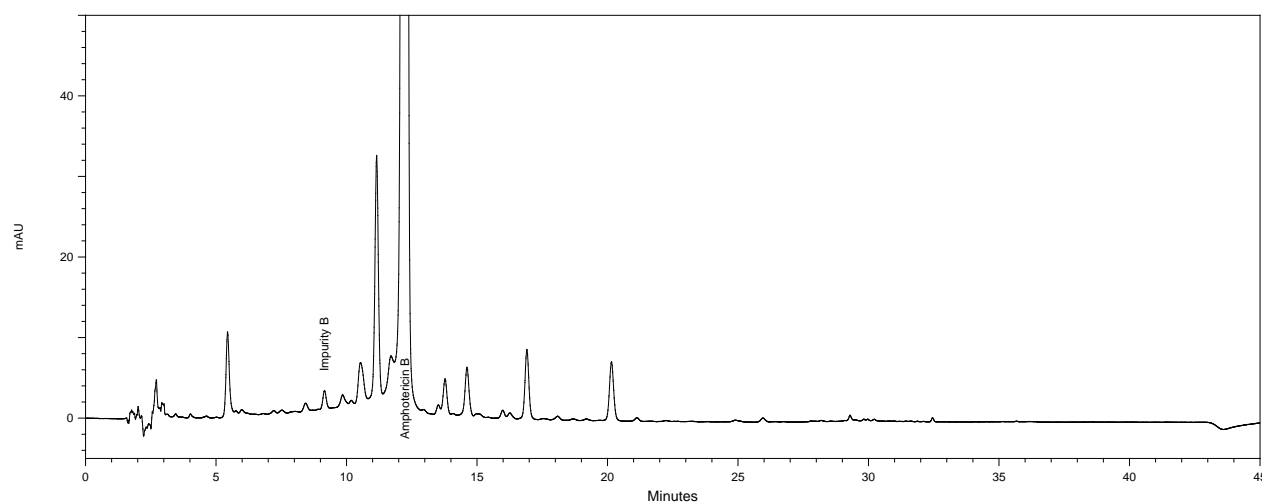
These chromatograms are provided for information only as an aid to analysts and intended as guidance for the interpretation and application of BP monographs.

Typical chromatogram for solution (5) at 383 nm in the Related Substances test for Amphotericin for Infusion as published in BP 2016.



The chromatogram shows three peaks, impurity B (800 mAU) at 9.2 minutes, impurity C (800 mAU) at 9.6 minutes and amphotericin B (450 mAU) at 12.2 minutes.

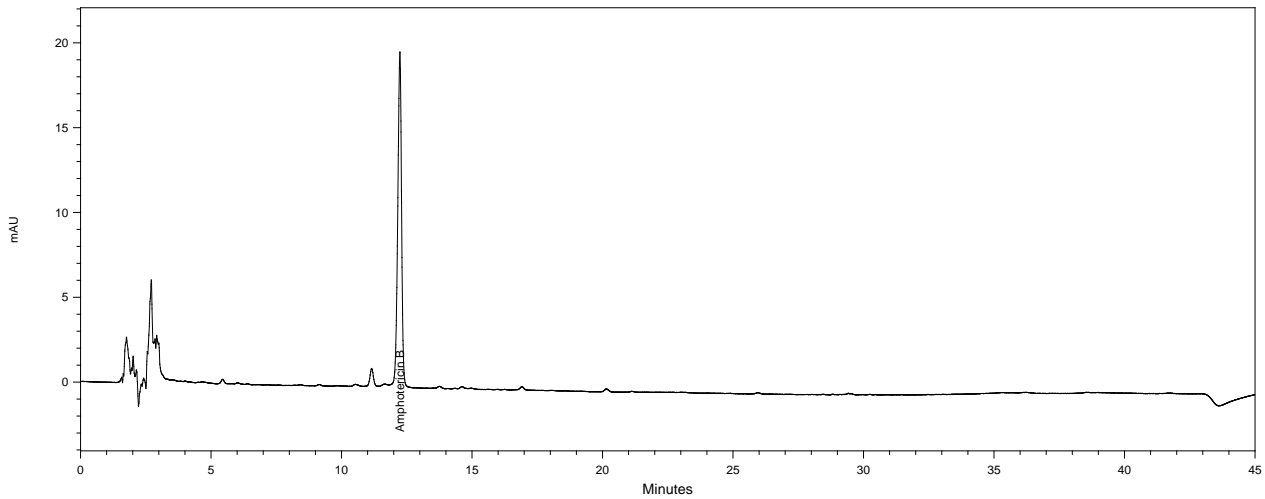
Typical chromatogram for solution (1) at 383 nm in the Related Substances test for Amphotericin for Infusion as published in BP 2016.



The chromatogram shows a large amphotericin B peak (off scale at 50 mAU) at 12.2 minutes and one known peak, impurity B (>2 mAU) at 9.2 minutes.



Typical chromatogram for solution (1) at 303 nm in the Related Substances test for Amphotericin for Infusion as published in BP 2016.



The chromatogram shows one known peak, amphotericin B (20 mAU) at 12.2 minutes.