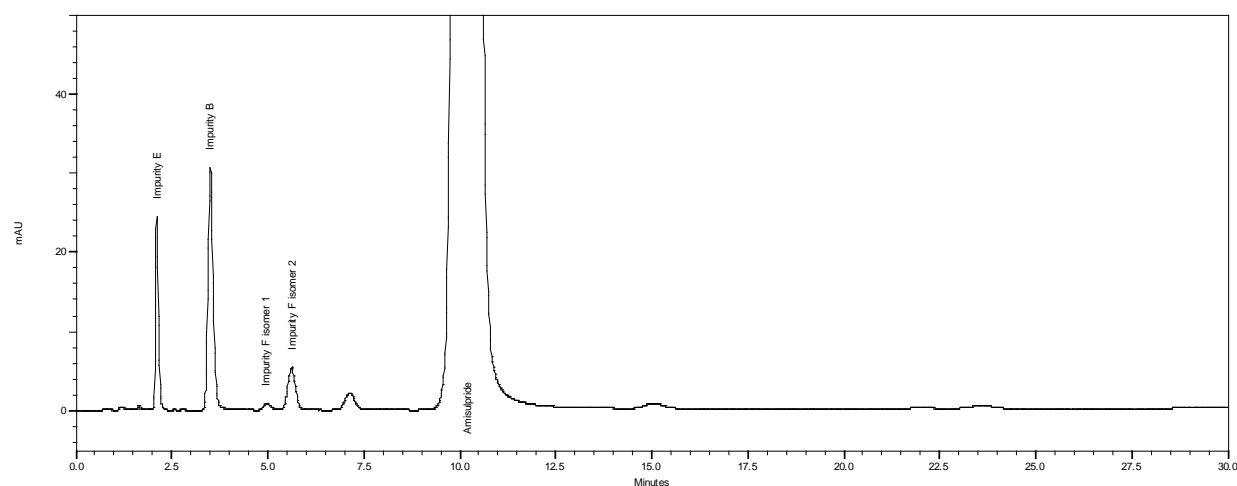




## Amisulpride Oral Suspension – BP 2016

This chromatogram is provided for information only as an aid to analysts and intended as guidance for the interpretation and application of BP monographs.

Typical chromatogram for solution (3) in the Related Substances test for Amisulpride Oral Solution as published in BP 2016.



Column	: Waters XTerra RP8 (150 mm x 4.6 mm, 5 $\mu$ m)
Method Ref.	: Related Substances method for the Amisulpride Tablets monograph from BP 2015
Buffer	: 0.68% w/v solution of potassium dihydrogen orthophosphate adjusted to pH 8.0 with 6M ammonia.
Mobile Phase	: A mixture of 20 volumes of methanol and 80 volumes of buffer.
Diluent	: Mobile phase
Flow Rate	: 1.0 mL/min
Column Temp	: 30°C
Injection Volume	: 20 $\mu$ L
Detection	: 240 nm