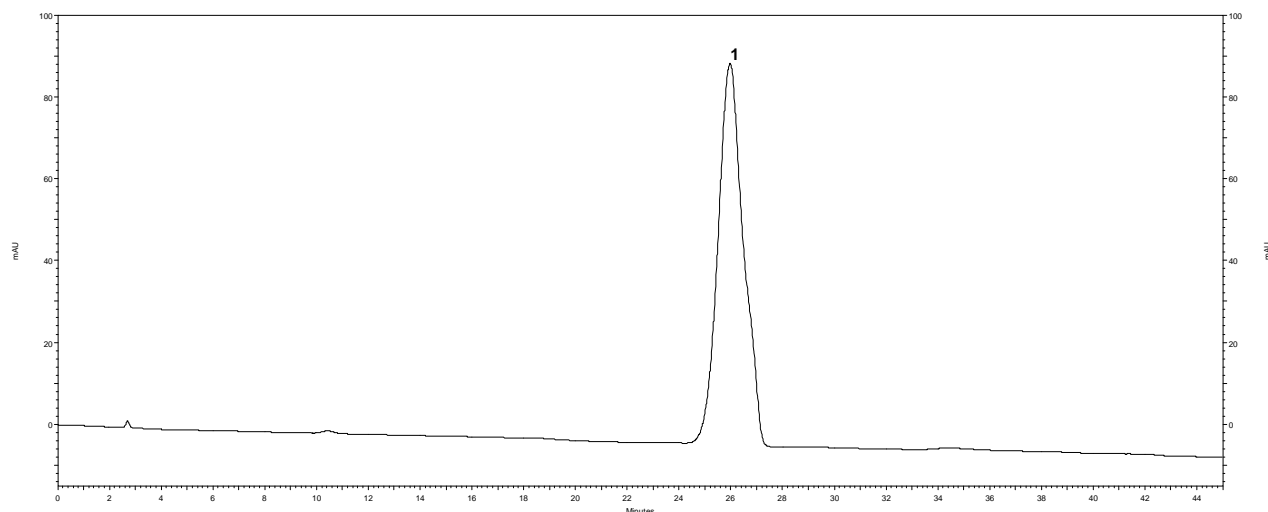


Amikacin injection – BP 2019

These chromatograms are provided for information only as an aid to analysts and are intended as guidance for the interpretation and application of BP monographs.

Typical chromatogram for solution (2) in the Assay test for Amikacin injection published in BP 2019.



Peak ID: 1: Amikacin sulfate

Column : Supelco Discovery C18 (250 mm x 4.6mm, 5 μ m)
Buffer : 0.2 M potassium dihydrogen phosphate adjusted to pH 3.0 with dilute phosphoric acid
Mobile Phase : 3.78 g sodium octane sulfonate and 41.76 g anhydrous sodium sulfate in a mixture of acetonitrile, buffer and water (68 : 40 : 936, v/v/v)
Diluent : Mobile phase
Flow Rate : 1.0 mL/min
Column Temp : 40°C
Injection Volume : 5 μ L
Detection : UV, 200 nm