

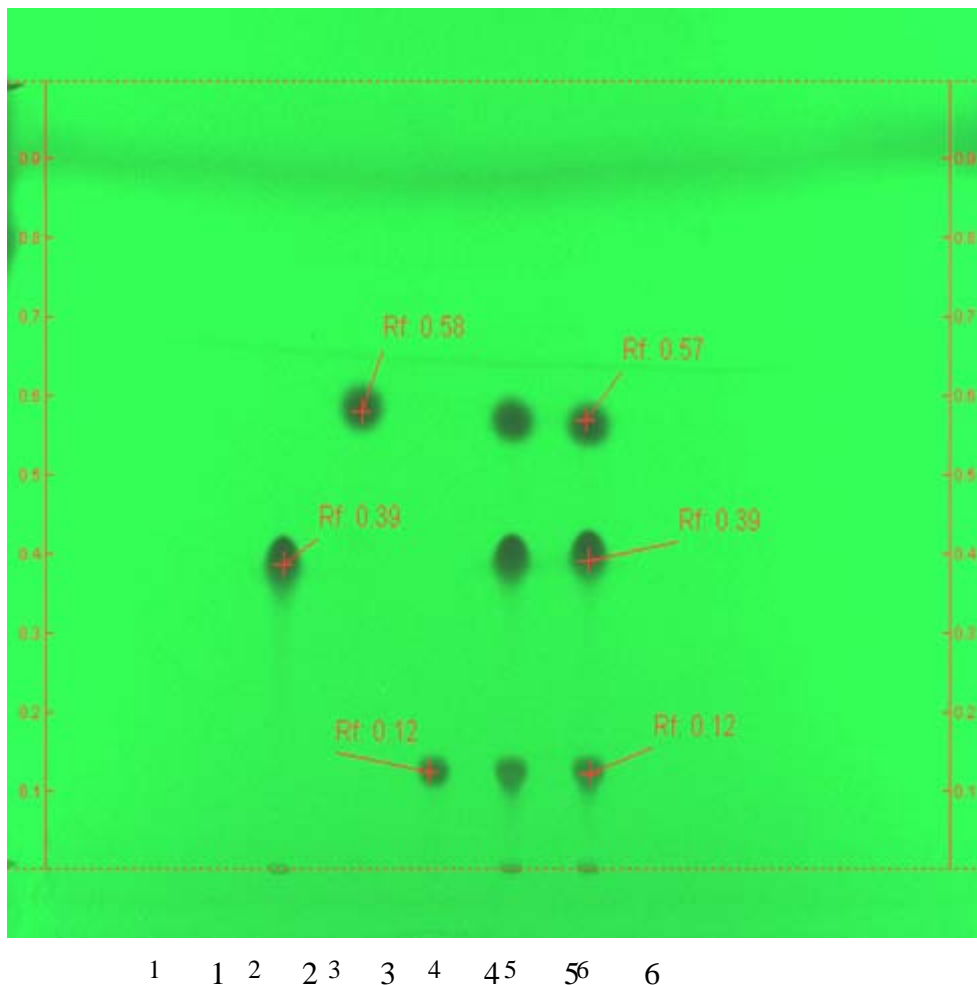


Abacavir, Zidovudine and Lamivudine Tablets – BP 2016

This chromatogram is provided for information only as an aid to analysts and intended as guidance for the interpretation and application of BP monographs.

Example chromatogram for Identification A in Abacavir, Zidovudine and Lamivudine Tablets as published in BP 2016.

1. Blank
2. 0.23% w/v of abacavir sulfate – solution (3)
3. 0.2% w/v of zidovudine – solution (2)
4. 0.1% w/v of lamivudine – solution (4)
5. 0.2% w/v of abacavir, 0.2% w/v of zidovudine and 0.1% w/v of lamivudine - solution (1)
6. 0.2% w/v of abacavir, 0.2% w/v of zidovudine and 0.1% w/v of lamivudine - solution (1)





British Pharmacopoeia

TLC Plate: Merck TLC silica gel 60 F254, 20 cm × 20 cm

Mobile Phase: 3 volumes of glacial acetic acid, 10 volumes of methanol and 90 volumes of dichloromethane

Diluent: Water

Application: 10 µL

Development: 12 cm

Drying: Dried in air

Detection: Ultraviolet light at 254 nm

Development time: 30 minutes