



**British Pharmacopoeia Commission Secretariat**  
MHRA, 10 South Colonnade, Canary Wharf  
London, E14 4PU  
United Kingdom

**British Pharmacopoeia Commission Laboratory**  
10 Priestley Road, Surrey Research Park  
Guildford, GU2 7XY  
United Kingdom

[www.pharmacopoeia.com](http://www.pharmacopoeia.com)

## BRITISH PHARMACOPOEIA CHEMICAL REFERENCE SUBSTANCE INFORMATION LEAFLET

### BUDESONIDE IMPURITY STANDARD CATALOGUE NUMBER 894 CURRENT BATCH: 4809

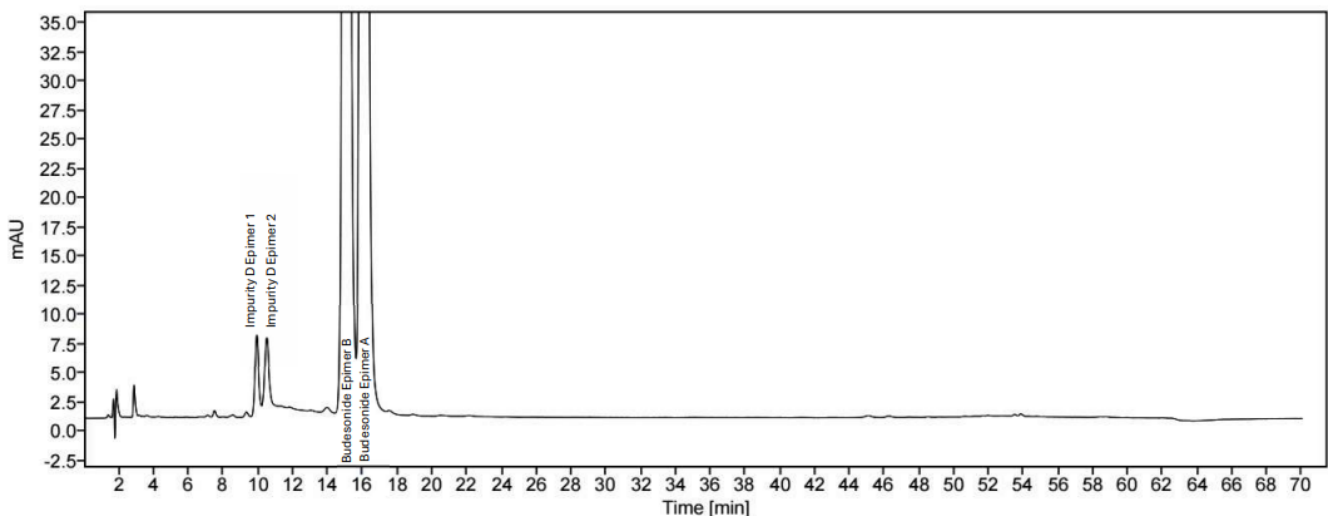
#### Declared Content

No declared content figure is given as the standard is not used for assay purposes.

#### Use

This British Pharmacopoeia Chemical Reference Substance (BPCRS) is to be used as directed in the monograph(s) of the British Pharmacopoeia and is not intended for any other purpose.

#### Reference Chromatogram(s)





**British Pharmacopoeia Commission Secretariat**

MHRA, 10 South Colonnade, Canary Wharf  
London, E14 4PU  
United Kingdom

**British Pharmacopoeia Commission Laboratory**

10 Priestley Road, Surrey Research Park  
Guildford, GU2 7XY  
United Kingdom

[www.pharmacopoeia.com](http://www.pharmacopoeia.com)

**Related Substances**

**Column:** Waters Spherisorb ODS2 C18 (150 mm x 4.6 mm, 3 µm)

**Mobile Phase A:** 2 volumes of ethanol, 23 volumes of acetonitrile and 66 volumes of phosphate buffer solution pH 3.2

**Mobile Phase B:** Equal volumes of acetonitrile and phosphate buffer solution pH 3.2

**Detection Wavelength:** 240 nm

**Flow Rate:** 1 mL/min

**Column temperature:** 50 °C

**Gradient Programme:**

Time (minutes)	Mobile Phase A (% v/v)	Mobile Phase B (% v/v)
0	100	0
38	100	0
50	0	100
60	0	100
61	100	0
70	100	0

**Additional Information**

When a British Pharmacopoeia Chemical Reference Substance (BPCRS) is directed to be used in an Assay or quantitative determination described in a monograph of the British Pharmacopoeia or the British Pharmacopoeia (Veterinary) the following statements apply.

Where a “declared content” is required the content stated on this leaflet is of the current batch of the BPCRS and is quoted on an ‘as is’ basis. This figure is to be used in calculating the results of the assay.

It is the responsibility of the analyst using any BPCRS for quantitative purposes to assure himself or herself that the batch number on the label corresponds with the batch number given on this leaflet.

For additional information on BPCRS please visit the British Pharmacopoeia website.

<https://www.pharmacopoeia.com>