



British Pharmacopoeia Commission Secretariat
MHRA, 10 South Colonnade, Canary Wharf
London, E14 4PU
United Kingdom

British Pharmacopoeia Commission Laboratory
10 Priestley Road, Surrey Research Park
Guildford, GU2 7XY
United Kingdom

www.pharmacopoeia.com

BRITISH PHARMACOPOEIA CHEMICAL REFERENCE SUBSTANCE INFORMATION LEAFLET

TENOXICAM DEGRADATION IMPURITY STANDARD CATALOGUE NUMBER 709 CURRENT BATCH: 4438

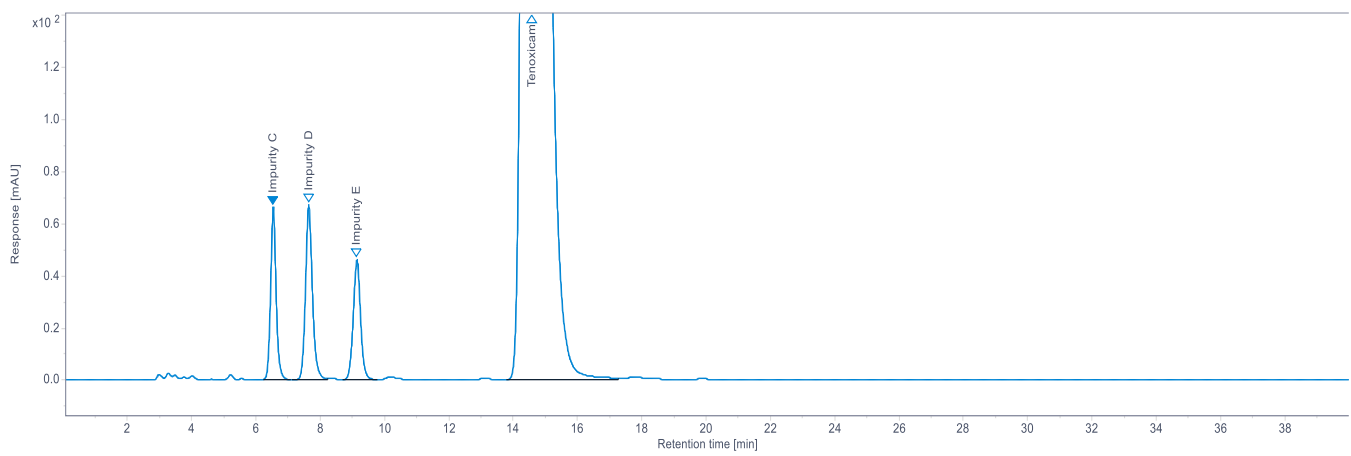
Declared Content

No declared content figure is given as the standard is not used for assay purposes.

Use

This British Pharmacopoeia Chemical Reference Substance (BPCRS) is to be used as directed in the monograph(s) of the British Pharmacopoeia and is not intended for any other purpose.

Reference Chromatogram(s)



Related Substances

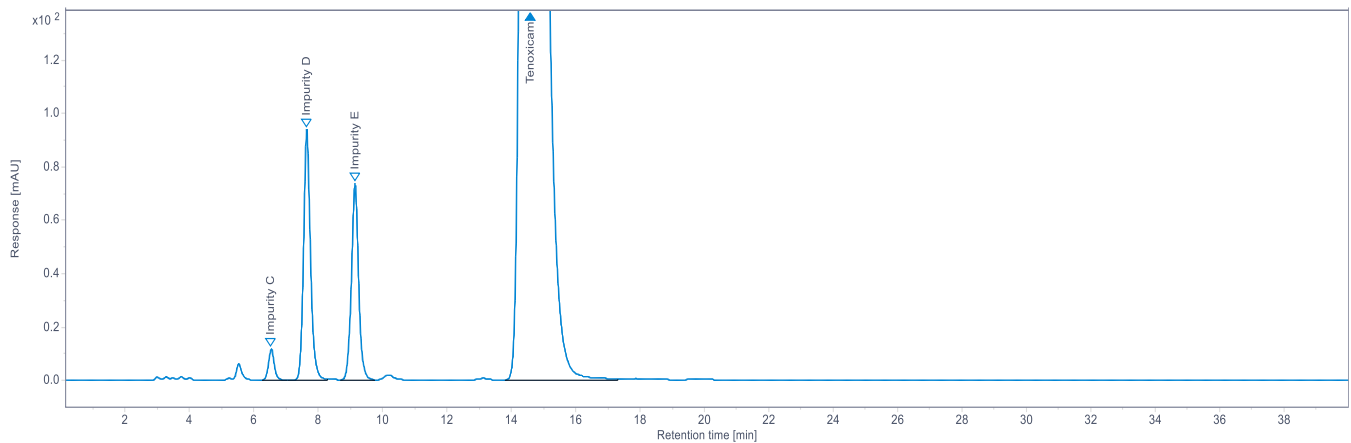
Detection wavelength: 254 nm



British Pharmacopoeia Commission Secretariat
MHRA, 10 South Colonnade, Canary Wharf
London, E14 4PU
United Kingdom

British Pharmacopoeia Commission Laboratory
10 Priestley Road, Surrey Research Park
Guildford, GU2 7XY
United Kingdom

www.pharmacopoeia.com



Related Substances

Detection wavelength: 290 nm

Chromatographic Conditions:

Column: Nucleosil C8 (250 mm x 4.0 mm, 5 µm)

Mobile Phase: Dissolve 0.12 g of sodium dodecyl sulfate in 700 mL of methanol, mix with 1000 mL of 0.05 M potassium dihydrogen orthophosphate and adjust the pH to 2.8 with orthophosphoric acid.

Flow rate: 0.7 mL/min

Additional Information

When a British Pharmacopoeia Chemical Reference Substance (BPCRS) is directed to be used in an Assay or quantitative determination described in a monograph of the British Pharmacopoeia or the British Pharmacopoeia (Veterinary) the following statements apply.

Where a “declared content” is required the content stated on this leaflet is of the current batch of the BPCRS and is quoted on an ‘as is’ basis. This figure is to be used in calculating the results of the assay.



British Pharmacopoeia Commission Secretariat

MHRA, 10 South Colonnade, Canary Wharf
London, E14 4PU
United Kingdom

www.pharmacopoeia.com

British Pharmacopoeia Commission Laboratory

10 Priestley Road, Surrey Research Park
Guildford, GU2 7XY
United Kingdom

It is the responsibility of the analyst using any BPCRS for quantitative purposes to assure himself or herself that the batch number on the label corresponds with the batch number given on this leaflet.

For additional information on BPCRS please visit the British Pharmacopoeia website.

<https://www.pharmacopoeia.com>