



British Pharmacopoeia Commission Secretariat

MHRA, 10 South Colonnade, Canary Wharf
London, E14 4PU
United Kingdom

British Pharmacopoeia Commission Laboratory

Queen's Road
Teddington, TW11 0LY
United Kingdom

www.pharmacopoeia.com

**BRITISH PHARMACOPOEIA CHEMICAL REFERENCE SUBSTANCE
INFORMATION LEAFLET**

**GLYCERYL TRINITRATE SOLUTION
CATALOGUE NUMBER 652
CURRENT BATCH: 3925**

Declared Content

0.9910% w/w of $C_3H_5N_3O_9$ solution (0.9910g of $C_3H_5N_3O_9$ in 100g of the BPCRS)

or

0.7820% w/v of $C_3H_5N_3O_9$ solution (0.7820g of $C_3H_5N_3O_9$ in 100ml of the BPCRS)

Use

This British Pharmacopoeia Chemical Reference Substance (BPCRS) is to be used as directed in the monograph(s) of the British Pharmacopoeia and is not intended for any other purpose.

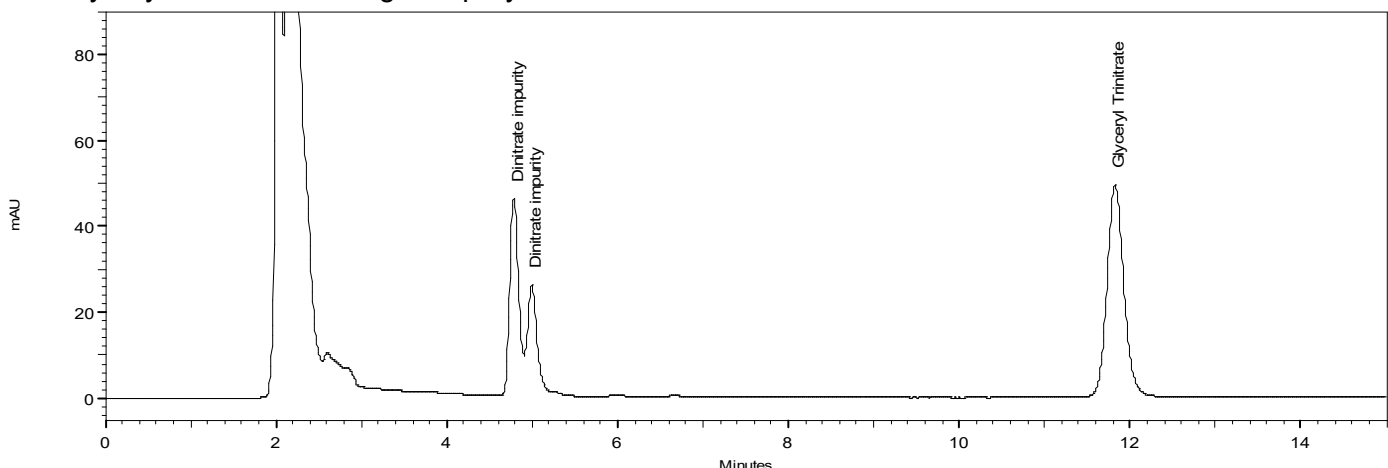
Reference Chromatogram(s)

For use in the monographs for:

Glyceryl Trinitrate Ointment

Glyceryl Trinitrate Transdermal Patches

Glyceryl Trinitrate Sublingual Spray





British Pharmacopoeia Commission Secretariat

MHRA, 10 South Colonnade, Canary Wharf
London, E14 4PU
United Kingdom

British Pharmacopoeia Commission Laboratory

Queen's Road
Teddington, TW11 0LY
United Kingdom

www.pharmacopoeia.com

Related substances

Column: Kingsorb C18 (250 mm x 4.6 mm, 5 µm)

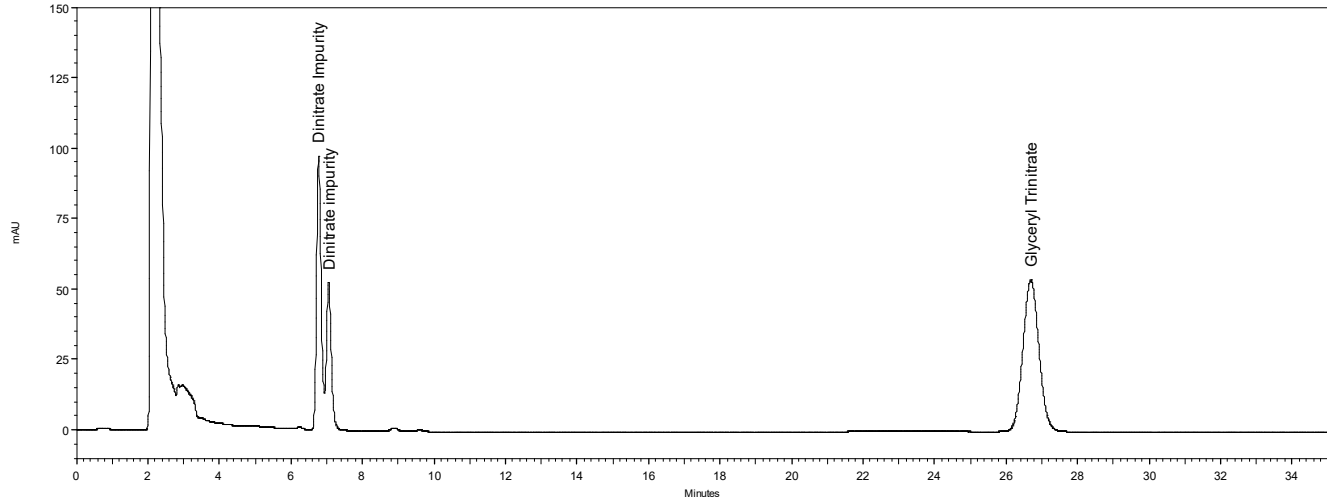
Mobile Phase: A mixture of 50 volumes of acetonitrile and 50 volumes of water

Flow rate: 1.0 mL/min

Detection Wavelength: 210 nm

Reference Chromatogram 2

For use in the monographs for:
Glyceryl Trinitrate Tablets



Related substances

Column: Kingsorb C18 (250 mm x 4.6 mm, 5 µm).

Mobile Phase: A mixture of 40 volumes of acetonitrile and 60 volumes of water.

Flow rate: 1.0 mL/min.

Detection Wavelength: 210 nm.

Injection volume: 50 µL



British Pharmacopoeia Commission Secretariat

MHRA, 10 South Colonnade, Canary Wharf
London, E14 4PU
United Kingdom

British Pharmacopoeia Commission Laboratory

Queen's Road
Teddington, TW11 0LY
United Kingdom

www.pharmacopoeia.com

Additional Information

When a British Pharmacopoeia Chemical Reference Substance (BPCRS) is directed to be used in an Assay or quantitative determination described in a monograph of the British Pharmacopoeia or the British Pharmacopoeia (Veterinary) the following statements apply.

Where a “declared content” is required the content stated on this leaflet is of the current batch of the BPCRS and is quoted on an ‘as is’ basis. This figure is to be used in calculating the results of the assay.

It is the responsibility of the analyst using any BPCRS for quantitative purposes to assure himself or herself that the batch number on the label corresponds with the batch number given on this leaflet.

For additional information on BPCRS please visit the British Pharmacopoeia website.

<https://www.pharmacopoeia.com>