



**British Pharmacopoeia Commission Secretariat**

MHRA, 10 South Colonnade, Canary Wharf  
London, E14 4PU  
United Kingdom

**British Pharmacopoeia Commission Laboratory**

Queen's Road  
Teddington, TW11 0LY  
United Kingdom

[www.pharmacopoeia.com](http://www.pharmacopoeia.com)

**BRITISH PHARMACOPOEIA CHEMICAL REFERENCE SUBSTANCE  
INFORMATION LEAFLET**

**NIFEDIPINE  
CATALOGUE NUMBER 462  
CURRENT BATCH: 2997**

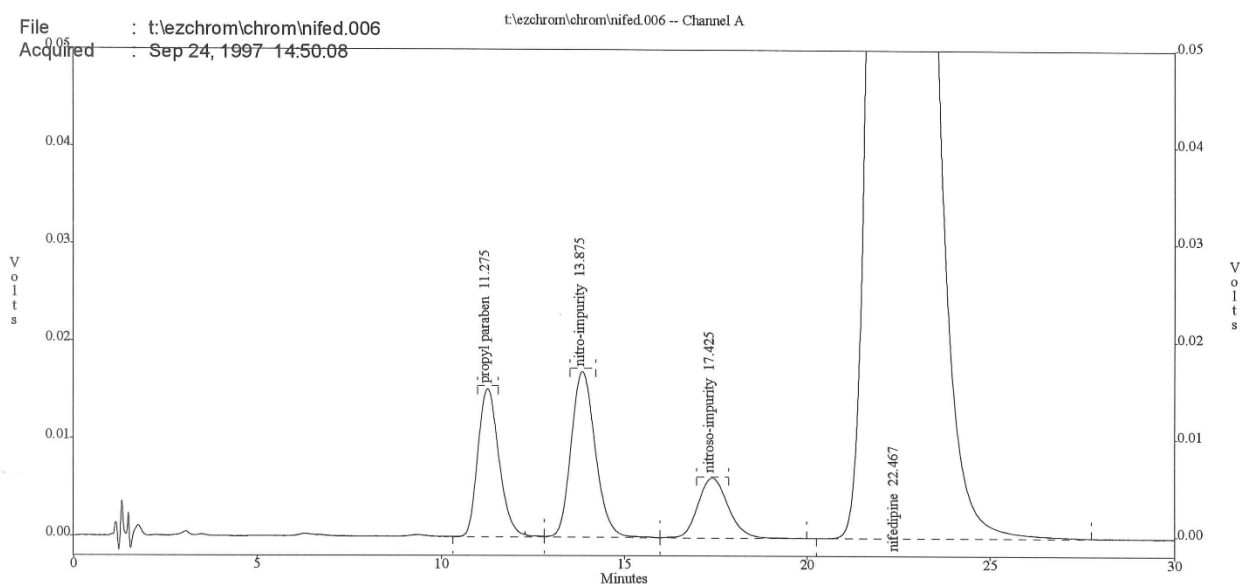
**Declared Content**

99.9 % of  $C_{17}H_{18}N_2O_6$

**Use**

This British Pharmacopoeia Chemical Reference Substance (BPCRS) is to be used as directed in the monograph(s) of the British Pharmacopoeia and is not intended for any other purpose.

**Reference Chromatogram(s)**



**Nitro- and nitroso-phenylpyridine analogues**

**British Pharmacopoeia Commission Secretariat**

MHRA, 10 South Colonnade, Canary Wharf  
London, E14 4PU  
United Kingdom

**British Pharmacopoeia Commission Laboratory**

Queen's Road  
Teddington, TW11 0LY  
United Kingdom

[www.pharmacopoeia.com](http://www.pharmacopoeia.com)

**Column:** Lichrosorb RP18, 10 µm (25 cm x 4.6 mm)

**Mobile Phase:** 9 volumes of acetonitrile, 36 volumes of methanol and 55 volumes of 0.01 M sodium borate buffer, pH 8.0.

**Flow rate:** 2.0 ml/minute

**Detection Wavelength:** 220 nm

**Elution order:** propyl hydroxybenzoate (11.3 minutes)  
dimethyl-2,6-dimethyl-4-(2-nitrophenyl)pyridine-3,5-dicarboxylate  
(13.9 minutes)  
dimethyl-2,6-dimethyl-4-(2-nitrosophenyl)pyridine-3,5-dicarboxylate  
(17.4 minutes)  
nifedipine (22.5 minutes)

**Additional Information**

When a British Pharmacopoeia Chemical Reference Substance (BPCRS) is directed to be used in an Assay or quantitative determination described in a monograph of the British Pharmacopoeia or the British Pharmacopoeia (Veterinary) the following statements apply.

Where a “declared content” is required the content stated on this leaflet is of the current batch of the BPCRS and is quoted on an ‘as is’ basis. This figure is to be used in calculating the results of the assay.

It is the responsibility of the analyst using any BPCRS for quantitative purposes to assure himself or herself that the batch number on the label corresponds with the batch number given on this leaflet.

For additional information on BPCRS please visit the British Pharmacopoeia website.

<https://www.pharmacopoeia.com>