



**British Pharmacopoeia Commission Secretariat**

MHRA, 10 South Colonnade, Canary Wharf  
London, E14 4PU  
United Kingdom

**British Pharmacopoeia Commission Laboratory**

Queen's Road  
Teddington, TW11 0LY  
United Kingdom

[www.pharmacopoeia.com](http://www.pharmacopoeia.com)

**BRITISH PHARMACOPOEIA CHEMICAL REFERENCE SUBSTANCE  
INFORMATION LEAFLET**

**2-METHYL-6-METHYLAMINOHEPTAN-2-OL**

**CATALOGUE NUMBER 457**

**CURRENT BATCH: 1648**

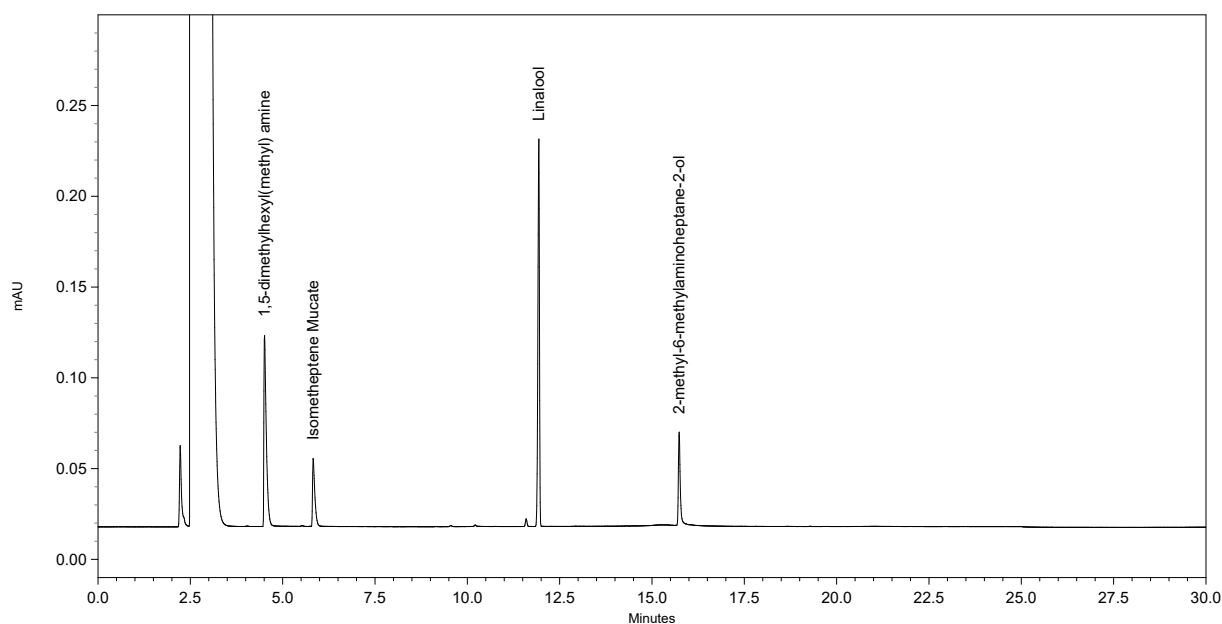
**Declared Content**

No declared content figure is given as the standard is not used for assay purposes.

**Use**

This British Pharmacopoeia Chemical Reference Substance (BPCRS) is to be used as directed in the monograph(s) of the British Pharmacopoeia and is not intended for any other purpose.

**Reference Chromatogram(s)**





**British Pharmacopoeia Commission Secretariat**

MHRA, 10 South Colonnade, Canary Wharf  
London, E14 4PU  
United Kingdom

**British Pharmacopoeia Commission Laboratory**

Queen's Road  
Teddington, TW11 0LY  
United Kingdom

[www.pharmacopoeia.com](http://www.pharmacopoeia.com)

**Additional Information**

The reference chromatogram overleaf has been prepared using a solution containing 0.02% w/v each of 1,5-dimethylhexyl(methyl)amine BPCRS, 2-methyl-6-methylaminoheptan-2-ol BPCRS, isometheptene mucate and linalool in dichloromethane using the following chromatographic conditions:

**Column:** DB-WAX (film thickness 0.25  $\mu\text{m}$ , 30 m x 0.25 mm)

**Injector Temperature:** 190 °C.

<b>Oven Temperature:</b>	<u>Time (minutes)</u>	<u>Temperature (°C)</u>
	0	80
	15	140
	30	140

**Detector Temperature:** 200 °C

**Injection Volume:** 1  $\mu\text{l}$

**Elution order:**  
1,5-dimethylhexyl(methyl)amine (4.5 minutes)  
isometheptene mucate (5.8 minutes)  
Linalool (11.9 minutes)  
2-methyl-6-methylaminoheptan-2-ol (15.7 minutes)

For additional information on BPCRS please visit the British Pharmacopoeia website.

<https://www.pharmacopoeia.com>