



British Pharmacopoeia Commission Secretariat

MHRA, 10 South Colonnade, Canary Wharf
London, E14 4PU
United Kingdom

British Pharmacopoeia Commission Laboratory

Queen's Road
Teddington, TW11 0LY
United Kingdom

www.pharmacopoeia.com

**BRITISH PHARMACOPOEIA CHEMICAL REFERENCE SUBSTANCE
INFORMATION LEAFLET**

1,5-DIMETHYLHEXYL(METHYL)AMINE

CATALOGUE NUMBER 456

CURRENT BATCH: 1647

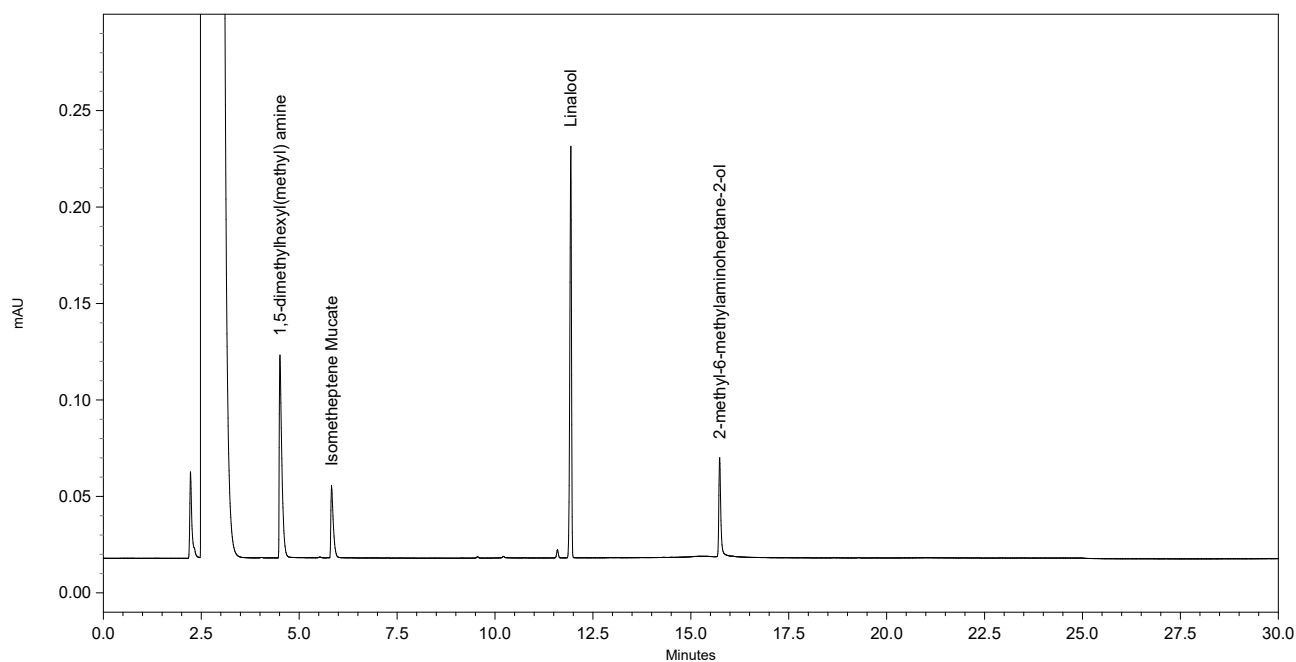
Declared Content

None given.

Use

This British Pharmacopoeia Chemical Reference Substance (BPCRS) is to be used as directed in the monograph(s) of the British Pharmacopoeia and is not intended for any other purpose.

Reference Chromatogram(s)





British Pharmacopoeia Commission Secretariat

MHRA, 10 South Colonnade, Canary Wharf
London, E14 4PU
United Kingdom

British Pharmacopoeia Commission Laboratory

Queen's Road
Teddington, TW11 0LY
United Kingdom

www.pharmacopoeia.com

Additional Information

The reference chromatogram overleaf has been prepared using a solution containing 0.02% w/v each of 1,5-dimethylhexyl(methyl)amine BPCRS, 2-methyl-6-methylaminoheptan-2-ol BPCRS, isometheptene mucate and linalool in dichloromethane using the following chromatographic conditions:

Column: DB-WAX (film thickness 0.25 µm, 30 m x 0.25 mm)

Injector Temperature: 190 °C.

Oven Temperature:	<u>Time (minutes)</u>	<u>Temperature (°C)</u>
	0	80
	15	140
	30	140

Detector Temperature: 200 °C

Injection Volume: 1 µl

Elution order:
1,5-dimethylhexyl(methyl)amine (4.5 minutes)
isometheptene mucate (5.8 minutes)
Linalool (11.9 minutes)
2-methyl-6-methylaminoheptan-2-ol (15.7 minutes)

For additional information on BPCRS please visit the British Pharmacopoeia website.
<https://www.pharmacopoeia.com>