

British Pharmacopoeia Commission Secretariat
MHRA, 10 South Colonnade, Canary Wharf
London, E14 4PU
United Kingdom

British Pharmacopoeia Commission Laboratory
10 Priestley Road, Surrey Research Park
Guildford, GU2 7XY
United Kingdom

www.pharmacopoeia.com

BRITISH PHARMACOPOEIA CHEMICAL REFERENCE SUBSTANCE INFORMATION LEAFLET

URSODEOXYCHOLIC ACID IMPURITY STANDARD CATALOGUE NUMBER 1142 CURRENT BATCH:4532

Declared Content

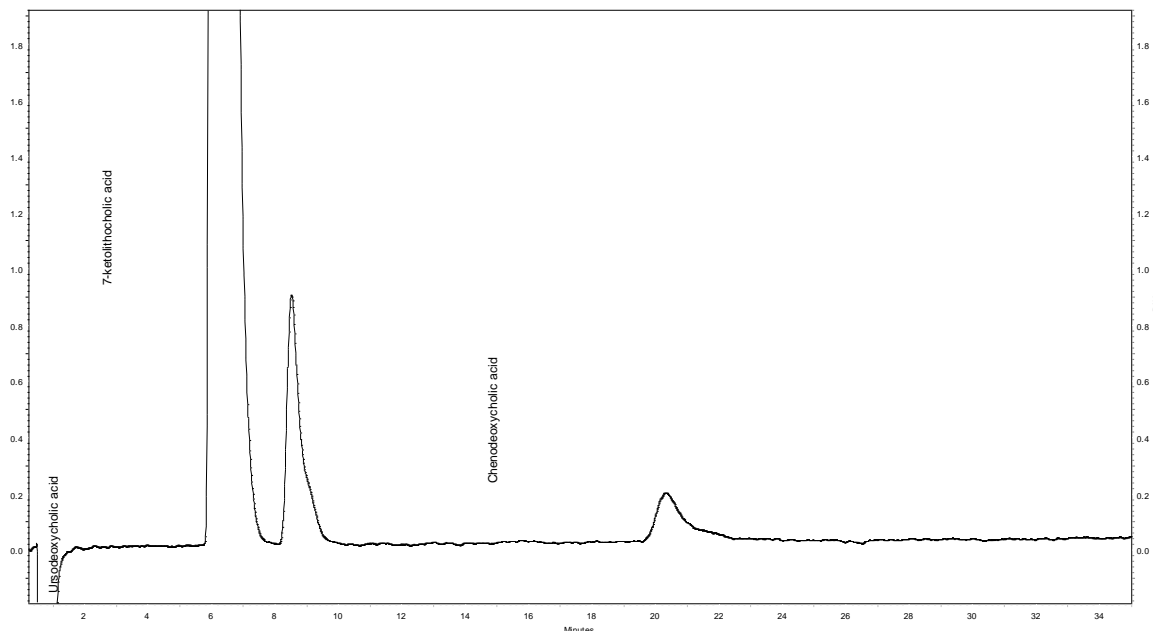
No declared content figure is given as the standard is not used for assay purposes.

Use

This British Pharmacopoeia Chemical Reference Substance (BPCRS) is to be used as directed in the monograph(s) of the British Pharmacopoeia and is not intended for any other purpose.

Reference Chromatogram(s)

Related substances



British Pharmacopoeia Commission Secretariat
MHRA, 10 South Colonnade, Canary Wharf
London, E14 4PU
United Kingdom

British Pharmacopoeia Commission Laboratory
10 Priestley Road, Surrey Research Park
Guildford, GU2 7XY
United Kingdom

www.pharmacopoeia.com

Column: Uptisphere HDO C18 (100 mm x 2.1 mm, 3 µm)

Mobile Phase: 25 volumes of acetonitrile, 34 volumes of methanol and 47 volumes of a solution prepared by dissolving 0.8 g of sodium dihydrogen orthophosphate dihydrate in 1000 mL of water and adjusting the pH to 3.0 with orthophosphoric acid

Diluent: 20 volumes of methanol and 80 volumes of mobile phase

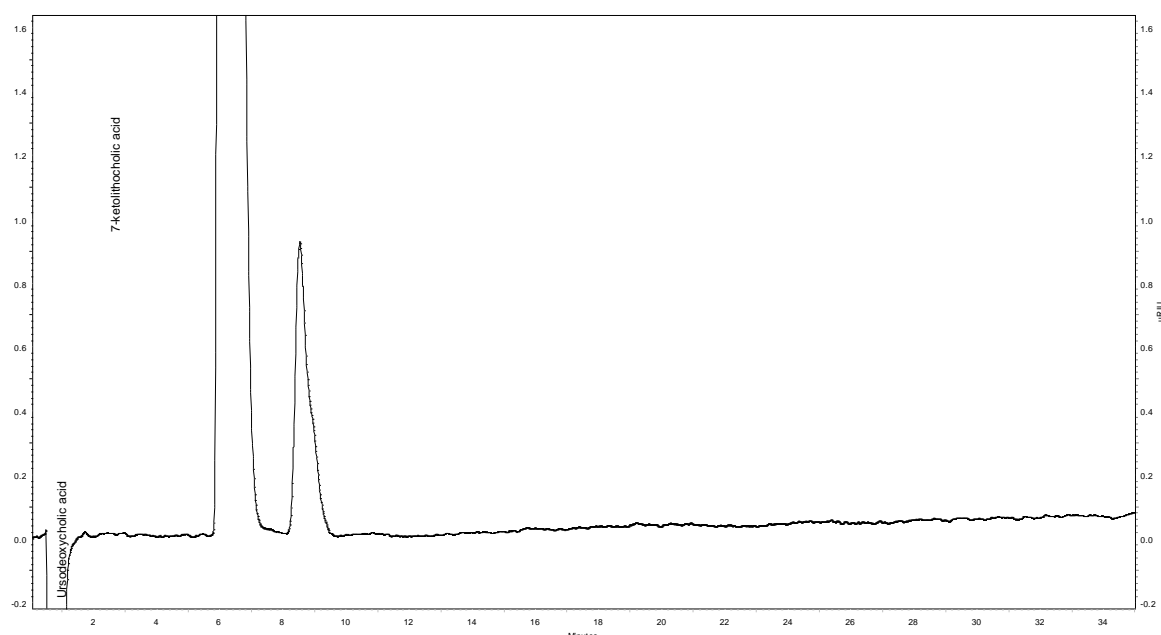
Detection Wavelength: Refractive Index

Flow Rate: 0.6 mL/min

Column Temperature: 40 °C

Injection Volume: 8 µL

Assay



Conditions as described under Related Substances

Additional Information

When a British Pharmacopoeia Chemical Reference Substance (BPCRS) is directed to be used in an Assay or quantitative determination described in a monograph of the British Pharmacopoeia or the British Pharmacopoeia (Veterinary) the following statements apply.

British Pharmacopoeia Commission Secretariat

MHRA, 10 South Colonnade, Canary Wharf
London, E14 4PU
United Kingdom

British Pharmacopoeia Commission Laboratory

10 Priestley Road, Surrey Research Park
Guildford, GU2 7XY
United Kingdom

www.pharmacopoeia.com

Where a “declared content” is required the content stated on this leaflet is of the current batch of the BPCRS and is quoted on an ‘as is’ basis. This figure is to be used in calculating the results of the assay.

It is the responsibility of the analyst using any BPCRS for quantitative purposes to assure himself or herself that the batch number on the label corresponds with the batch number given on this leaflet.

For additional information on BPCRS please visit the British Pharmacopoeia website.

<https://www.pharmacopoeia.com>